

Do Dogs Follow Weber's Law? The Role of Ratio and Difference in Quantity Preference


Hunter DeBoer, Hannah Fitzpatrick, London Wolff,
Anwyn Gatesy-Davis, and Jeffrey R. Stevens


University of Nebraska-Lincoln, Department of Psychology,
Center for Brain, Biology & Behavior, Lincoln, USA


Abstract


Weber's Law states that the ability to distinguish different stimuli depends on the relative magnitudes of those stimuli. When applied to quantity judgments, this means that the numerical ratio between two quantities (small amount / large amount) will underlie the ability to distinguish the quantities. Ratio-dependent quantification is a hallmark of Weber's Law that has been demonstrated across a range of species, including dogs. However, other factors such as numerical difference (large amount – small amount) are confounded with ratio but would not support Weber's Law. Most work on dog quantification abilities has only considered ratio and not difference. Here, we offer dogs a food quantity preference task where we varied both difference and ratio in quantity pairs to investigate which of these factors influences preferences. To address this, dogs could choose to eat one of two plates of food with different quantities of treats on them. We found that, when analyzed separately, both difference and ratio predicted whether the dogs chose the larger quantity of treats. However, when analyzed together, only difference predicted choice when controlling for ratio. In addition, we applied our analysis to data from two previously published studies and corroborated our findings. The results do not support the ratio-dependence required for Weber's Law, raising questions about its importance for quantity preference tasks in dogs.


Keywords: dog, numerical difference, numerical ratio, quantity, Weber's Law

Hunter DeBoer  <http://orcid.org/0000-0003-1635-1908>

Hannah Fitzpatrick  <http://orcid.org/0000-0003-3019-6342>

London Wolff  <http://orcid.org/0000-0001-8359-2619>

Anwyn Gatesy-Davis  <http://orcid.org/0009-0006-7254-4332>

Jeffrey R. Stevens  <http://orcid.org/0000-0003-2375-1360>

This study was pre-registered at AsPredicted (https://aspredicted.org/MX2_6L2). All data and analysis materials are available at the Open Science Framework (<https://osf.io/tp8ah/>). This study was funded in part by the National Science Foundation (NSF-1658837) and the University of Nebraska-Lincoln Maude Hammond Fling Faculty Research Fellowship. We are grateful to Maya Lashley, Ashley Llewellyn, Lauryn Rivale, and Yasmin Worth for assistance in testing the dogs. We thank Uplifting Paws and the dog owners for allowing us to work their dogs.

✉ Jeffrey R. Stevens, Department of Psychology, Center for Brain, Biology & Behavior, B83 East Stadium, University of Nebraska-Lincoln, Lincoln, NE 68588, USA. E-mail: jeffrey.r.stevens@gmail.com

Introduction

Imagine a dog is offered bowls with two different amounts of food. Will it choose the bowl with more food? Can it distinguish between the quantities, or will it make a random choice? Quantifying items in its environment is crucial to the survival of any animal when it comes to hunting, mating, and fighting or fleeing (Nieder, 2020). Yet, it is not clear exactly how animals quantify items in their environment. The aim of this study is to investigate what factors dogs use when judging different quantities of food.

A key theory applied to animal quantitative judgments is Weber's Law, which states that "the ability to tell the difference in intensity between a pair of physical stimuli depend(s) on the ratio of their intensities" (Algom, 2021, p. 759). Though Weber's Law applies to a range of stimulus properties (time, acoustic frequency, visual wavelength: Akre & Johnsen, 2014), for detecting differences between quantities of items, it relies on *numerical ratio*, or the ratio of the smaller and larger quantities. For instance, the numerical pairs of [1, 2], [2, 4], and [4, 8] all have ratios of 0.5. As ratios get smaller, the quantities become more dissimilar, and differences become easier to detect. A large range of species have shown ratio dependence in quantification tasks (Beran, 2001; Potrich et al., 2015; Ditz & Nieder, 2016; Lucon-Xiccato et al., 2018; d'Etorre et al., 2021; Lin et al., 2021). Researchers typically interpreted ratio effects on quantitative judgments as evidence supporting Weber's Law.

In contrast to ratio, animals might quantify based on *numerical difference* (also called distance or disparity), or the mathematical difference between two values. For example, pairs [1, 2], [2, 3], and [4, 5] each have a difference of 1. According to Weber's Law, when holding ratio constant, difference should not influence quantity judgments—only ratio should matter. Nevertheless, we see evidence for numerical difference influencing these judgments (Brannon & Terrace, 2000; Beran, 2001; Nieder et al., 2002). Critically, difference and ratio are confounded (as difference increases, ratio decreases), so researchers must statistically control for both of them to establish whether they have independent effects on performance. Across several species, we see both difference and ratio accounting for performance independently (Agrillo et al., 2007; Hanus & Call, 2007; Kelly, 2016).

Our aim in this study was to investigate the role of difference and ratio in domestic dogs' (*Canis familiaris*) quantity judgments. Like other species, previous research has shown ratio dependence in dogs (Ward & Smuts, 2007; Baker et al., 2012; Miletto Petrazzini & Wynne, 2016; Aulet et al., 2019; Rivas-Blanco et al., 2020). However, the only study to also consider numerical difference was Ward and Smuts, and they did not investigate each factor's independent contributions to performance. Therefore, we do not have any evidence regarding the relative contribution of difference and ratio in dog quantity judgments.

To address this gap, we conducted a food quantity preference task with dogs, in which subjects were shown two different quantities of treats and could choose one to consume. If dogs can discriminate between the two quantities and prefer more to fewer treats, they should choose the larger quantity. We pre-registered our study to test two hypotheses: (1) dogs will prefer larger quantities more when the ratios between options are smaller and differences are larger, and (2) dogs' quantity preferences will depend on difference independently of ratio. After analyzing our data, we conducted exploratory analyses on previously published dog quantity data sets to further investigate the independent roles of difference and ratio.

Method

Ethics Statement

All procedures were conducted in an ethical and responsible manner, in full compliance with all relevant codes of experimentation and legislation and were approved by the University of Nebraska-Lincoln Internal Review Board (project ID UNL-00020491) and the Institutional Animal Care and Use Committee (project ID 2632). All participants (dog owners) offered consent to participate, and they acknowledged that de-identified data could be published publicly.

Participants

We recruited 11 dogs from the dog daycare Uplifting Paws in Lincoln, Nebraska from March-July 2023. Four dogs were excluded due to an insufficient number of completed sessions, leaving 7 dogs that were included in the analyses. The subjects were 71.4% female ($n = 5$) and 100.0% were spayed or neutered. Their breed composition included two goldendoodles, one golden retriever, one rough-haired collie, one miniature pinscher mix, one dachshund mix, and one yellow Labrador retriever mix. The average age for subjects was 1.6 ± 1.0 (mean \pm standard deviation) years old, ranging from 1-3 years old.

Materials

We used Pet Botanics Soft & Chewy Beef Flavor Training Rewards (1 cm high and wide, 0.8 g) as treats for all dogs except one dog who needed low-fat treats due to a medical reason. This study also used two 14 cm diameter beige plates. We recorded sessions with a HERO9 Black GoPro camera on a tripod.

The study took place in a 9×4.5 m sectioned-off portion of an open playroom at the dog daycare location. Other dogs could not enter the testing area during data collection but were occasionally present in other areas of the room. No owners or daycare staff were present during the testing sessions.

Procedure

Pairs

We used ten different pairs of treats per session to collect data. The nine pairs presented in the experimental portion of the study represented three sets of ratios, including numerical differences of one, two, four, and six (Table 1). During testing, we grouped pairs into three sets of ratios (1:3, 1:2, and 2:3 ratio pairs). Subjects completed the sets of ratios in order from the smallest ratio set to the largest ratio (1:3, then 1:2, then 2:3) with randomized pair ordering within each ratio set. We placed a [1, 6] pair in between each set because it was an easy discrimination and kept dogs engaged.

Table 1

Numerical Pairs

Ratio	Difference			
	1	2	4	6
1:3		[1, 3]	[2, 6]	[3, 9]
1:2	[1, 2]	[2, 4]	[4, 8]	
2:3	[2, 3]	[4, 6]	[8, 12]	

Table used with permission under a CC-BY 4.0 license: DeBoer et al. (2024); available at <https://doi.org/10.31234/osf.io/rn8gq>.

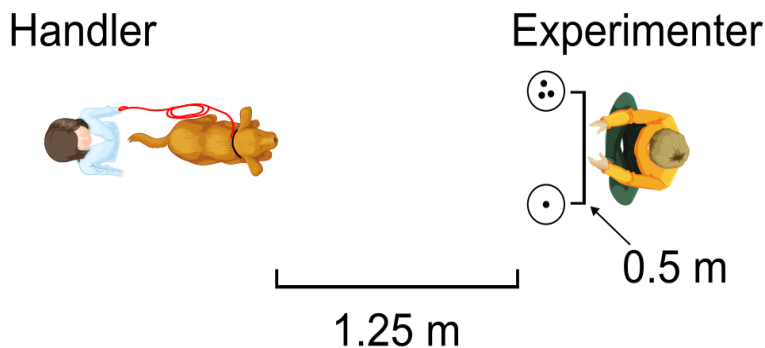
Experimental Setup

Research assistants played the role of handler or experimenter during the experiment. While both the experimenter and handler were informed of the study's hypotheses, procedures were standardized to control for any inadvertent cues to minimize biasing the dogs' behavior (e.g., experimenter looking down during dog's choice time), and a naive assistant coded a subset of sessions to measure inter-rater reliability.

The handler leashed the dog at the beginning of the study and used the leash to assist with positioning and retrieving the dog between trials. The handler sat in a chair approximately 1.5 m in front of and facing the experimenter (Figure 1). Before each trial, the handler positioned the dog to sit or stand directly in front of them, between the handler and the experimenter. From this starting location, both plates of treats were easily visible and equidistant to the dog. The experimenter was seated on the floor, facing toward the dog. The experimenter placed the two plates in front of them, 0.5 m apart (from the center of each plate) and 1.25 m from the dog. The experimenter placed an opaque plastic occluder between the plates and the dog, obscuring the plates from the dog's view during setup.

Figure 1

Experimental Set-Up



Note. Figure used with permission under a CC-BY 4.0 license: DeBoer et al. (2024); available at <https://doi.org/10.31234/osf.io/rn8gq>.

General Procedure

Before each trial, the handler placed the dog in the starting location, and the experimenter placed the designated number of treats on each plate behind the occluder. Treats were evenly distributed near the center of the plates roughly 2.5 cm apart. Then the experimenter called the dog's name to get their attention and made eye contact with the dog to make sure they were engaged. Next, the experimenter broke eye contact and removed the occluder. The experimenter then tapped both plates simultaneously to attract the dog's attention, looked down, and sat still with their hands on their knees. After approximately 5 s, the experimenter signaled the handler by saying "now" in a neutral tone, and the experimenter then gave a release cue to the dog by saying "okay" in a positive tone and releasing the leash. The release command was given again after several seconds if the dog failed to move or showed no visible reaction to the command.

A choice was defined as the dog touching one of the plates and/or the treats on a plate. As soon as the dog chose one plate, the experimenter immediately removed the other plate. Once the dog had consumed all the treats on the chosen plate, the experimenter put the occluder back in place, and the handler recalled the dog. The handler praised the dog upon recall independent of their choice. The experimenter never praised the dog. If the dog did not make a choice after 20 s, the outcome was denoted as No Choice, and the trial was repeated.

Warm-Ups

Before data collection, the dogs completed two warm-up blocks to determine whether they had a general preference for a larger quantity of food and demonstrated motivation to participate in the study. For Warm-up 1, there were two [0, 2] pairs,

and for Warm-up 2, there were two [1, 6] pairs. The side with the larger number of treats was randomized for the first trial. The larger number in the next trial was offered on the alternate side, so the dog experienced the larger number on both their left and right sides.

We repeated this procedure for each warm-up trial. To pass each warm-up, the dog needed to choose the larger number of each pair twice in a row, once on both their left and right sides. After completing both warm-ups, the dog moved on to the experimental portion of the study.

Experimental Trials

The experimental trials followed the same procedure as the warm-ups but with different numerical pairs: ten treat pairs (nine experimental plus [1, 6]) (see Table 1). Each session consisted of at least four warm-up pairs, one trial of each of the nine experimental pairs, and two [1, 6] pairs. We required each dog to complete 10 sessions. If a dog failed to complete any of the 10 sessions for any reason (see Abort Criteria), they were required to complete make-up sessions later.

De-Side Bias

During the experimental trials, if the dog chose the same side five consecutive times (regardless of which side was correct), the experimenter presented the dog with two consecutive [1, 6] trials. Both times, the experimenter put the larger number of treats on the side that the dog was avoiding. If the dog successfully chose the larger side both times, the experimental trials resumed. If the dog chose the smaller side once, the [1, 6] pair was repeated two more times. If the dog chose the smaller side twice in a row, the experimenter presented two [0, 2] trials. If the dog chose larger two times in a row, they moved back up to the [1, 6] trials. If the dog chose the empty plate twice in a row for the [0, 2] pair, or did not make two consecutive correct choices after 10 total trials, the dog failed the session.

Abort Criteria

Abort criteria were used to determine when experimental sessions would be terminated before session completion. A dog could meet the abort criteria in one of two ways. First, the dog could fail the warm-ups. If the dog could not pass warm-ups within 10 total tries or made No Choice twice in a row, the session was aborted.

Second, the dog could fail the experimental trials. If the dog made No Choice twice during the experimental trials or failed the de-side bias protocol, the session was aborted (see De-Side Bias). If a session was aborted, we began a new session on the next available day. Observed No Choice trials were uniformly distributed across trials, suggesting that satiation likely did not result in reduced responding.

Inter-Rater Reliability

All data were live coded during sessions and also video recorded. An independent coder unfamiliar with the hypotheses recoded choices from video recordings for 22.2% of the trials. We calculated Cohen's kappa to assess the inter-rater reliability of the binary response variable for the side of choice (right or left). The reliability was very good with 98.3% agreement ($\kappa = .97$, 95% CI [0.93, 1.00], $N = 181$).

Data Analysis

We used R (Version 4.4.2; R Core Team, 2024) and the R-packages *BayesFactor* (Version 0.9.12.4.7; Morey & Rouder, 2024), *bayestestR* (Version 0.15.1; Makowski et al., 2019), *cocoon* (Version 0.2.0; Stevens, 2025a), *detritus* (Version 0.0.2; Stevens, 2025b), *flectable* (Version 0.9.7; Gohel & Skintzos, 2024), *ggrepel* (Version 0.9.6; Slowikowski, 2024), *here* (Version 1.0.1; Müller, 2020), *labelled* (Version 2.14.0; Larmarange, 2024), *lme4* (Version 1.1.36; Bates et al., 2015), *papaja* (Version 0.1.3; Aust & Barth, 2023), *patchwork* (Version 1.3.0; Pedersen, 2024), *performance* (Version 0.13.0; Lüdtke et al., 2021), *scales* (Version 1.3.0; Wickham et al., 2023) and *tidyverse* (Version 2.0.0; Wickham et al., 2019) for our analyses. The manuscript was created using *quarto* (Version 1.4.4, Allaire & Dervieux, 2024) and the *apaquarto* Quarto extension (Schneider, 2024). Data, analysis scripts, and reproducible research materials are available at the Open Science Framework (<https://osf.io/tp8ah/>). This study was pre-registered at https://aspredicted.org/MX2_6L2.

We draw inferences based on Bayes factors because they offer bidirectional information about evidence supporting both the alternative (H_1) and the null (H_0) hypotheses. Bayes factors provide the ratio of evidence for H_1 over evidence for H_0 (Wagenmakers, 2007). Therefore, a Bayes factor of 3 ($BF_{10}=3$) indicates three times more evidence for H_1 than H_0 , whereas a Bayes factor of 1/3 (the reciprocal of 3) indicates 3 times more evidence for H_0 than H_1 . We interpret Bayes factors based on Wagenmakers et al. (2018), where a $BF_{10} > 3$ is considered sufficient evidence for the alternative hypothesis, $BF_{10} < 1/3$ is considered sufficient evidence for the null hypothesis, and $1/3 < BF_{10} < 3$ indicate neither hypothesis has evidence supporting it (suggesting the sample size is too small to draw conclusions).

Prior to analysis, we transformed the left and right choice variable from each trial into a binary outcome, with 1 representing a choice for the larger option and 0 representing a choice for the smaller option. Because the outcome variable was binary, we used generalized linear models with a binomial error distribution (logistic regression) for our analyses. We also created variables with the numerical difference between each numerical pair by subtracting the larger number from the smaller

($6 - 1 = 5$), as well as created the ratio by dividing the smaller by the larger number ($1 / 6 = 0.17$).

Hypothesis 1: Separate Effects of Difference and Ratio

For Hypothesis 1, we expect that dogs will prefer the larger quantities more when the numerical differences between options are larger and ratios are smaller. To test this, we used model selection to test which logistic regression models performed best with our data. All models included choice for larger as the binary outcome variable and subject as a random effect. The null model included no predictors ($choice \sim 1 + (1 | subject)$), the difference-only model included only difference as a predictor ($choice \sim difference + (1 | subject)$), and the ratio-only model included only ratio ($choice \sim ratio + (1 | subject)$). Support for the hypothesis would require Bayes factors greater than 3 for both the difference-only and ratio-only models. Using the *test_performance()* function from the *performance* package (Lüdtke et al., 2021), we calculated Bayes factors for the difference and ratio models with the null model as the reference model. The *test_performance()* function estimates Bayes factors from the Bayesian Information Criterion (BIC) value, which assumes a unit information prior.

Hypothesis 2: Difference and Ratio Effects Independent of Each Other

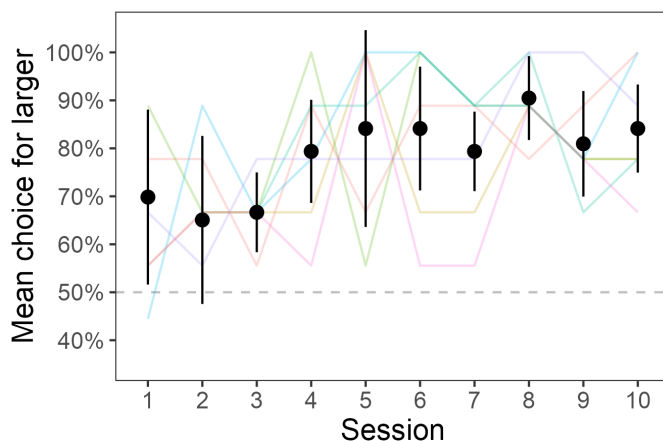
For Hypothesis 2, we expect that dogs' quantity preferences will depend on difference independently of ratio. To test this, we included both difference and ratio in the same multiple regression ($choice \sim difference + ratio + (1 | subject)$) and compared it to the difference-only model and the ratio-only model using Bayes factors. With both predictors in the same model, this yields a model of the effect of difference controlling for the effect of ratio and vice versa. Comparing, for example, the combined model to the difference-only model asks whether ratio has any effect above and beyond difference. A Bayes factor greater than 3 for the combined difference and ratio model over the difference-only model and the ratio-only model would support this hypothesis.

Results

Overall, the subjects chose the larger amount in 78.4% of trials. Choice for the larger amount increased from 69.8% to 84.1% from the first to last session, with a plateau in performance starting around session four (Figure 2).

Figure 2

Preference for Larger Quantity Over Sessions



Note. Dots represent overall mean percent choice for larger amounts, error bars represent within-subject 95% confidence intervals, and lines represent individual subject mean values. Figure used with permission under a CC-BY 4.0 license: DeBoer et al. (2024); available at <https://doi.org/10.31234/osf.io/rn8gq>.

Pre-Registered Results

To test Hypothesis 1's suggestion that both difference and ratio influence preferences for larger amounts, we conducted comparisons of the difference-only model and the ratio-only model to a null model. We found extremely strong evidence for difference influencing preference (Figure 3A, $BF_{10} = 2531.3$) and strong evidence for ratio influencing preference (Figure 3B, $BF_{10} = 15.9$), supporting Hypothesis 1.

Hypothesis 2 suggests that difference will influence preferences independent of ratio. That is, difference and ratio are correlated, but difference will have an effect above and beyond ratio (Figure 3C). To test this, we compared a model with both difference and ratio included to the difference-only and ratio-only models. Surprisingly, adding difference to the ratio-only model provided a much better performance ($BF_{10} = 30.3$), but adding ratio to the difference-only model produced worse performance ($BF_{10} = 0.19$). Thus, Hypothesis 2 was supported (difference influenced preferences independent of ratio), but the reverse was not true (ratio did not influence preferences independent of difference).

Exploratory Results

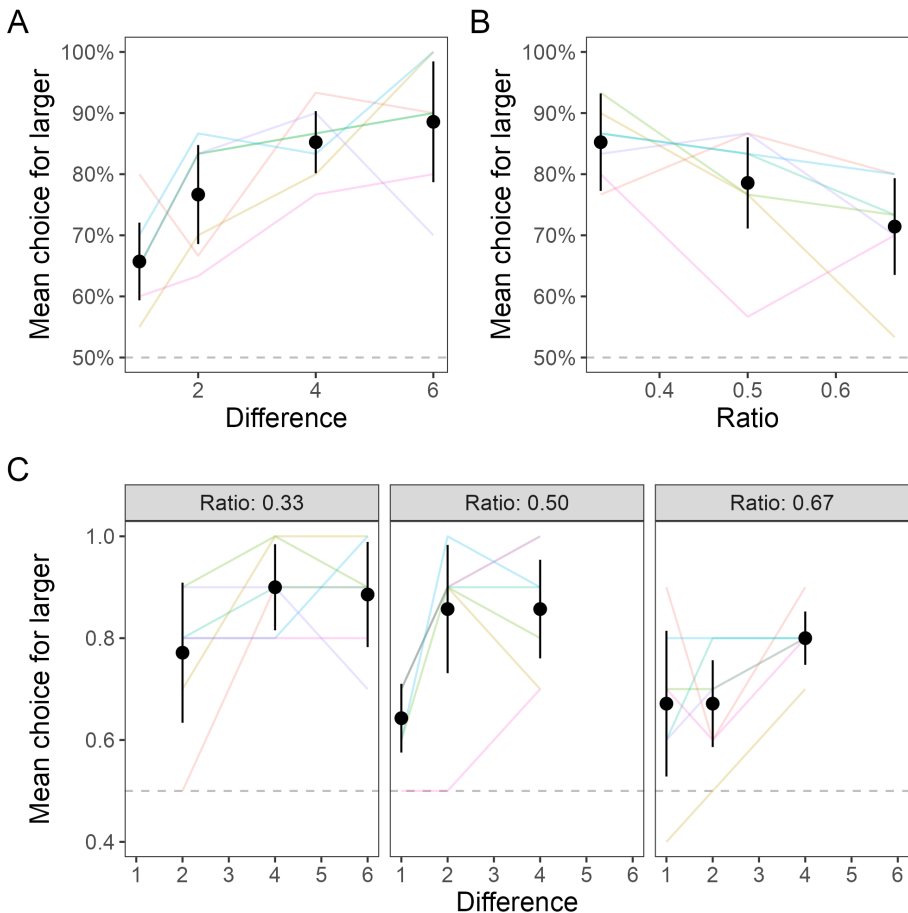
The pre-registered analysis indicated that adding difference improved model performance, but adding ratio did not. We conducted additional analyses to explore this relationship. First, we investigated the frequentist analysis of the logistic

regression for the model with difference and ratio. This approach showed an effect of difference ($\beta = 0.263$, $SE = 0.074$, $z = 3.541$, $p < .001$) but not ratio ($\beta = -1.419$, $SE = 0.804$, $z = -1.764$, $p = .078$), corroborating our original findings.

Second, we added a fourth model to our original model selection analysis that included the interaction between difference and ratio and compared the four models against the null model to see which one performed best. The difference-only model performed best (Table 2), suggesting that including ratio did not improve model performance.

Figure 3

Preference for Larger Quantity as a Function of Difference and Ratio



Note. Dots represent overall mean percent choice for larger amounts, error bars represent within-subject 95% confidence intervals, and lines represent individual subject mean values. Figure used with permission under a CC-BY 4.0 license: DeBoer et al. (2024); available at <https://doi.org/10.31234/osf.io/rn8gq>

Table 2

Model Comparison for Difference and Ratio Effects on Choice

Model	BIC	BF
choice ~ 1 + (1 subject)	670.0	
choice ~ diff + (1 subject)	654.3	2531.3
choice ~ ratio + (1 subject)	664.4	15.9
choice ~ diff + ratio + (1 subject)	657.6	481.4
choice ~ diff * ratio + (1 subject)	664.0	19.8

Table used with permission under a CC-BY 4.0 license: DeBoer et al. (2024); available at <https://doi.org/10.31234/osf.io/rn8gq>

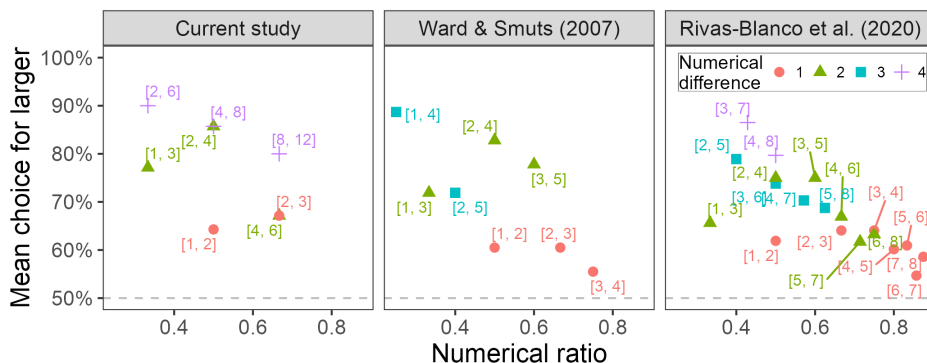
Because difference and ratio are correlated and regressions do not function well under collinearity, we conducted an additional analysis that investigated whether difference drove choice within each of the three ratios. That is, holding ratio constant, does difference influence choice? For this analysis, we split the data into the three ratios and calculated the mean percent choice for each difference within each subject (Figure 3C). Using the *lmBF()* function from the *BayesFactor* package (Morey & Rouder, 2024), we calculated Bayes factors for the effect of difference for each ratio with the subject as a random effect. We found Bayes factors of $BF_{10} = 1.3$ for ratios of 0.33, $BF_{10} = 2.8$ for ratios of 0.50 and $BF_{10} = 2.1$ for ratios of 0.67. Thus, all Bayes factors were below our threshold for moderate evidence but were all greater than 1, suggesting weak evidence favoring the model with difference over the null model. These indeterminate findings are likely due to the small sample size of only 7 subjects.

We have evidence that, when controlling for ratio, only difference accounts for numerical preferences in our data set. To explore the generalizability of this finding, we analyzed other available dog quantity data sets. Ward and Smuts (2007) published one of the first studies exploring dog food quantity preferences. In their first experiment, they offered 18 dogs one trial each of eight numerical pairs varying in difference and ratio (Figure 4). Though the trial-by-trial data were not available, we extracted pair means from their plot of choice proportion versus ratio (their Figure 2) using WebPlotDigitizer (version 5.2, Rohatgi, 2024). Figure 4 shows slightly lower performance than in our current study, but this is not surprising given that the subjects in Ward & Smuts only experience one trial of each numerical pair.

Ward and Smuts (2007) found that both difference and ratio influenced quantity preferences in their subjects. However, they ran only separate regressions, so they couldn't determine whether ratio influenced preference independent of difference. To test this, we performed a model comparison of difference-only, ratio-only, difference and ratio main effects, and difference and ratio with interaction linear regression models using their estimated numerical pair means. Bayes factors indicated that the difference-only model outperformed all other models ($BF_{10} = 24.4$).

Figure 4

Preferences for Numerical Pairs Across Studies



Note. Figure used with permission under a CC-BY 4.0 license: DeBoer et al. (2024); available at <https://doi.org/10.31234/osf.io/rn8gq>

In addition to Ward and Smuts (2007), we analyzed data from Study 1, Phase 1 of Rivas-Blanco et al. (2020), who had 20 dogs experience a discrimination task in which they responded to which of two panels contained more or fewer items. After being trained on nine pairs of numbers with magnitudes between 1-8, subjects experienced four trials for each of 19 new pairs of unrewarded probe trials with ratios ranging between 0.33-0.88. Again, the performance was slightly lower than our current data (Figure 4), but the subjects only experienced four trials of each pair.

Rivas-Blanco et al. (2020) provided the trial-by-trial data with their study, so we could apply the same analysis used with our data. We conducted a model comparison of logistic regression models for difference-only, ratio-only, difference and ratio main effects, and difference and ratio with interaction effects on the binary correct/incorrect outcome variable. Bayes factors indicated that the difference-only model outperformed all other models ($BF_{10} > 10000$).

Interestingly, Phase 2 of Rivas-Blanco et al. (2020) included similar ratios as Phase 1 but magnitudes of 9-32 items. In contrast to our previous work, the ratio-only model performed best ($BF_{10} > 10000$).

Discussion

Using a quantity preference task in dogs, we found that numerical difference better accounted for choices for the larger amounts of treats than numerical ratio. Due to the surprising nature of this finding, we analyzed two other data sets on dog quantitative judgments. In three out of four data sets, when controlling for ratio, only difference accounted for choices. The only exception was one data set in which the numerical values ranged from 9–32 items. Thus, at small magnitudes, three different

studies demonstrate an independent effect of difference but not ratio on quantitative judgments in dogs.

Implications

A key finding across the study of animal quantity judgments has been the ratio effect; that is, the ratio between a pair of magnitudes influences the ability to discriminate or choose between them. Ratio dependence is a key hallmark of Weber's Law, and many studies have used ratio dependence as direct evidence of Weber's Law.

In one of the earliest studies on dog quantitative cognition, Ward and Smuts (2007) found that numerical ratio explained reward preferences, which they posited as evidence for Weber's Law. Since then, many other studies have found ratio dependence in dogs (Baker et al., 2012; Miletto Petrazzini & Wynne, 2016; Aulet et al., 2019; Rivas-Blanco et al., 2020). However, Ward and Smuts was the only study that also tested the effect of difference on quantitative cognition, and they found an effect of difference. Yet, they did not include both difference and ratio in the same model to control for each other. When we analyzed their summarized data with difference and ratio in the same model, we found that only difference (when controlling for ratio) accounted for their choices. We found similar effects in a re-analysis of Rivas-Blanco et al. (2020) data for small magnitudes. This suggests that numerical difference may have been overlooked when previous research in dog quantitative cognition focused on ratio effects and Weber's Law.

This emphasis on ratio and Weber's Law is not altogether unreasonable. Many studies across a wide range of species have found ratio effects. However, many of these studies did not test for difference effects at all, or if they did, they did not account for potential confounds with ratio. When researchers do test for independent effects of difference and ratio, the findings are mixed across studies. In some cases, ratio but not difference accounts for discrimination and preference (Cantlon & Brannon, 2006; Buckingham et al., 2007; Tomonaga, 2008; Tornick et al., 2015; Wolff et al., 2024). In other cases, both difference and ratio have independent effects on quantitative cognition (Agrillo et al., 2007; Hanus & Call, 2007; Kelly, 2016). Though we are not aware of cases outside of dogs where difference but not ratio drove choice, there are situations where neither difference nor ratio appear to be associated with performance (Irie-Sugimoto et al., 2009; Wolff et al., 2024). However, given that only some studies include both difference and ratio in the same multiple regression, there is the possibility (as demonstrated in Ward & Smuts, 2007; Rivas-Blanco et al., 2020) that this analysis would yield more cases in which difference accounts for performance.

Do dogs really not use ratio when assessing quantities? We present three independent data sets (our data, Ward & Smuts, 2007; Rivas-Blanco et al., 2020) indicating that ratio plays no role beyond that of difference. This provides consistent

evidence against ratio dependence in dogs at the tested magnitudes. We have not seen this in other species, but many studies of quantitative cognition do not (1) systematically vary both difference and ratio and (2) test both factors in the same multiple regression model. We hope this work encourages others to both systematically vary difference and ratio and analyze them in the same model.

What does this mean for Weber's Law? These three data sets suggest that ratio dependence is a necessary but not sufficient criterion for demonstrating Weber's Law. That is, the true presence of Weber's Law governing quantitative cognition will result in ratio dependence. However, the presence of ratio dependence does not always imply Weber's Law unless other factors like numerical difference are taken into account. We propose that when testing for Weber's Law, researchers investigate other signatures of this principle such as scalar variability—variance in responses should increase with magnitude (Meck & Church, 1983). While ratio dependence is a key component of Weber's Law, it also implies scalar variability. Baker et al. (2012), for example, tested for ratio dependence (unfortunately, without including difference) in dogs but also directly tested for and found scalar variability.

Finally, though we found no evidence for ratio dependence in dogs across three data sets, all three of those studies used relatively low magnitudes of items to quantify (less than 10). In a fourth data set using larger magnitudes (greater than 8), our analysis showed ratio dependence and no difference effect. This makes sense as difference is not a feasible factor for quantity judgments at large magnitudes. Interestingly, this suggests that dogs, like other species (Hunt et al., 2008; Agrillo et al., 2012), may be using two different cognitive mechanisms for quantity judgments, depending on the magnitudes. The *approximate number system* is a proposed cognitive mechanism that estimates quantities approximately. It follows Weber's Law and shows both ratio dependence and scalar variability (Cantlon et al., 2009; Odic & Starr, 2018; Nieder, 2020). Thus, ratio effects implicate the approximate number system as a mechanism for quantification. An alternative mechanism—the *object-file system*—tracks individual objects, maintaining an accurate representation of number. Thus, accuracy should not depend on difference or ratio. Feigenson et al. (2002) has demonstrated that human infants show high accuracy (regardless of ratio) at low magnitudes (below 4), indicating a possible object-file system. At higher magnitudes, however, ratio effects are present, indicating a possible approximate number system (Xu & Spelke, 2000). When numerical pairs crossed the object-file threshold (one number below and one at or above 4), the infants failed regardless of ratio. The difference effect observed in our three dog data sets do not fit neatly into either of these purported systems because the absence of ratio effects contradicts the approximate number system and the presence of difference effects contradicts the object file system. Moreover, there does not seem to be an object-file threshold with the dogs—preferences range from 80–90% even at large spans like 2 vs. 6 and 8 vs. 12 (Figure 4). This suggests the possibility of a potential third mechanism for numerical judgments based on difference that works primarily at small magnitudes.

Replication and more theoretical work are needed to validate the difference effect and propose a cognitive mechanism for its existence.

Considerations

Though our results show promise for increasing attention to numerical difference in dog quantification tasks, other potential issues should be considered when interpreting our findings. A key consideration from our data set is that our experiment was conducted on a small sample of dogs. Because we wanted many repeated sessions with each subject, we opted to conduct this study at a dog daycare. Though we recruited 11 dogs, only 7 completed all experimental sessions. However, what we lacked in sample size, we made up for in data per subject, with 10 trials for each numerical pair tested. Most previous studies on dog quantitative cognition run one to four trials per pair (Ward & Smuts, 2007: 1; Baker et al., 2012: 1; Rivas-Blanco et al., 2020: 4), though Miletto Petrazzini and Wynne (2016) ran eight trials per pair. This may be problematic because, as our acquisition data shows, performance plateaus around four exposures to the pairs (Figure 2). So aggregating data over the first four exposures results in lower performance and higher variance, and we recommend offering more exposures to numerical pairs for future studies. Therefore, though our sample size is small, inflating between-subject variance, our estimate of numerical judgments is more precise within subjects, reducing within-subject variance. To compensate for our small sample size, we analyzed two other data sets with larger sample sizes and found similar results across data sets. Nevertheless, replication with larger sample sizes is needed to validate these results.

In addition to sample size, we also must consider the sample population. Most dog cognition studies recruit dog owners to bring their dogs into a research lab for studies. This already results in a specific subset of dogs, limited to those whose owners are able to bring their dogs in for testing (Stevens et al., 2022). Due to the repeated nature of testing for this study, we opted to test at a dog daycare, which could result in a different but similarly narrow subset of possible dogs from the population. For instance, dogs who attend daycare may be more cognitively enriched than other dogs on average, which could affect their performance on our cognitive task (Nippak et al., 2007). Or owners who can afford to send their dogs to daycare may purchase dog food and treats with different nutritional profiles than other owners, and nutrition may influence cognition (May & Laflamme, 2019). The generalizability of our results may therefore be limited to certain subsets of dogs. However, again, we applied our analyses to two other data sets with different populations of dogs—Ward and Smuts (2007) and Rivas-Blanco et al. (2020) tested pet dogs that owners brought into the lab—and found the same results. Moreover, we expect that dogs may perform differently in different cultures due to variation in how guardians raise and interact with their dogs (Stevens et al., 2022). Yet, the Austrian sample from Rivas-Blanco et al. showed the same effects as our U.S.

sample. So, though our population may be different from other studies, we find similar effects.

Another important consideration in quantitative judgment studies is the type of task. Our study used a quantitative *preference* task, where the subjects must not only discriminate between two quantities but also exhibit a preference between them by presumably choosing the larger option (Wolff et al., 2024). This contrasts with a *discrimination* task where subjects only have to discriminate between two quantities and get rewarded for choosing the correct option. Preference tasks may result in more variable data than discrimination tasks because, in addition to discrimination, subjects must be motivated to consume more rewards. Though subjects might be able to tell the difference between two quantities of food, they may not care enough to bother choosing the larger quantity. This difference in tasks is rarely recognized (but see Agrillo & Bisazza, 2014), but considering the cognitive processes involved in our tasks is critical to understanding animal cognitive abilities (Mendelson et al., 2016). Most studies of quantitative judgments in dogs use preference tasks. However, Rivas-Blanco et al. (2020) used a discrimination task, and, as we have shown, applying our analysis to their data corroborates our finding of a difference effect but no ratio effect at small magnitudes. Thus, this finding has been demonstrated across both preference and discrimination tasks.

A methodological consideration involves the order of pair presentation. We presented numerical pairs in increasing order of ratio because pilot testing suggested that having the higher ratios randomly presented resulted in their placement early in sessions, which caused the pilot subject to show side biases. We inferred that the higher ratios were more difficult, so our pilot subject did not discriminate between the two options and opted to choose the same side. Therefore, we ordered the ratios in increasing difficulty of the discriminations throughout the sessions. Though this seemed to address the side-bias issue, it created a confound between trial order and ratio. Thus, trial order and the possibility of satiation across the session cannot be directly assessed with the preference data (since preference for larger will likely decrease as the ratio increases). To investigate satiation effects, we examined the distribution of No Choice data across a session and found no trial order effects, suggesting that satiation likely did not result in reduced responding. Moreover, the preferences for larger in the highest ratio/last trials did not relate to the dogs' weights.

A final consideration in any study of numerical difference and ratio is the fact that the two factors are highly correlated. Their interconnected nature makes it very difficult to statistically separate them as causal factors, since collinearity is a problem for regression analyses. One solution to this problem is to test for difference effects when holding ratio constant. In our study, we had three ratios with three differences within each ratio. We tested for difference effects within each ratio. Unfortunately, due to our small sample sizes, we didn't have enough power to properly test for difference effects. Going forward, we encourage researchers to systematically vary

difference and ratio and use sample sizes large enough to run separate analyses on the different ratios.

Conclusion

In a food preference task with dogs, we found that the numerical difference between quantities accounted for their quantitative judgments, but numerical ratio did not account for judgments independent of difference effects. This is surprising given the large number of studies in dogs and other species showing ratio-dependent quantity judgments. However, many other studies either do not test for difference effects at all or do not test them in the same models as ratio to control for confounding effects. When we apply this multiple regression analysis to two previously published data sets in dogs, we replicate our finding of an independent effect of difference but not ratio. This work calls into question the ubiquity of ratio dependence in quantity judgments and whether Weber's Law is as universal as it appears. Though Weber's Law certainly applies at large magnitudes, our data combined with the independent data sets suggest that another process could drive quantity judgments at lower magnitudes in dogs. We propose that more studies should systematically vary the difference and ratio in their tasks and include both factors in their models to carefully assess the relative importance of both on quantity judgments. Though the difference effect has been demonstrated primarily in dogs, we see no reason why this should be unique to dogs, and we encourage researchers of other species to explore the role of difference in quantity judgments across species.

Author Contribution Statement

Author roles were classified using the Contributor Role Taxonomy (CRediT; <https://credit.niso.org/>) as follows: *Hunter DeBoer*: data curation, investigation, methodology, writing – original draft, and writing – review & editing. *Hannah Fitzpatrick*: investigation, methodology, project administration, writing – original draft, and writing – review & editing. *London Wolff*: investigation, methodology, supervision, and writing – review & editing. *Anwyn Gatesy-Davis*: investigation and writing – review & editing. *Jeffrey R. Stevens*: conceptualization, data curation, formal analysis, funding acquisition, methodology, project administration, resources, software, supervision, validation, visualization, writing – original draft, and writing – review & editing.

References

- Agrillo, C., & Bisazza, A. (2014). Spontaneous versus trained numerical abilities. A comparison between the two main tools to study numerical competence in non-human animals. *Journal of Neuroscience Methods*, 234, 82–91.
<https://doi.org/10.1016/j.jneumeth.2014.04.027>

-
- Agrillo, C., Dadda, M., & Bisazza, A. (2007). Quantity discrimination in female mosquitofish. *Animal Cognition*, 10(1), 63–70. <https://doi.org/10.1007/s10071-006-0036-5>
- Agrillo, C., Piffer, L., Bisazza, A., & Butterworth, B. (2012). Evidence for two numerical systems that are similar in humans and guppies. *PLoS ONE*, 7(2), Article e31923. <https://doi.org/10.1371/journal.pone.0031923>
- Akre, K. L., & Johnsen, S. (2014). Psychophysics and the evolution of behavior. *Trends in Ecology & Evolution*, 29(5), 291–300. <https://doi.org/10.1016/j.tree.2014.03.007>
- Algom, D. (2021). The Weber–Fechner law: A misnomer that persists but that should go away. *Psychological Review*, 128(4), 757–765. <https://doi.org/10.1037/rev0000278>
- Allaire, J., & Dervieux, C. (2024). *quarto: R interface to “Quarto” markdown publishing system*. <https://github.com/quarto-dev/quarto-r>
- Aulet, L. S., Chiu, V. C., Prichard, A., Spivak, M., Lourenco, S. F., & Berns, G. S. (2019). Canine sense of quantity: Evidence for numerical ratio-dependent activation in parietotemporal cortex. *Biology Letters*, 15(12), Article 20190666. <https://doi.org/10.1098/rsbl.2019.0666>
- Aust, F., & Barth, M. (2023). *papaja: Prepare reproducible APA journal articles with R Markdown*. <https://github.com/crsh/papaja>
- Baker, J. M., Morath, J., Rodzon, K. S., & Jordan, K. E. (2012). A shared system of representation governing quantity discrimination in canids. *Frontiers in Psychology*, 3, Article 387. <https://doi.org/10.3389/fpsyg.2012.00387>
- Bates, D., Mächler, M., Bolker, B., & Walker, S. (2015). Fitting linear mixed-effects models using lme4. *Journal of Statistical Software*, 67(1), 1–48. <https://doi.org/10.18637/jss.v067.i01>
- Beran, M. J. (2001). Summation and numerosness judgments of sequentially presented sets of items by chimpanzees (*Pan troglodytes*). *Journal of Comparative Psychology*, 115(2), 181–191. <https://doi.org/10.1037/0735-7036.115.2.181>
- Brannon, E. M., & Terrace, H. S. (2000). Representation of the numerosities 1-9 by rhesus macaques (*Macaca mulatta*). *Journal of Experimental Psychology. Animal Behavior Processes*, 26(1), 31–49. <https://doi.org/10.1037//0097-7403.26.1.31>
- Buckingham, J. N., Wong, B. B. M., & Rosenthal, G. G. (2007). Shoaling decisions in female swordtails: How do fish gauge group size? *Behaviour*, 144(11), 1333–1346. <https://doi.org/10.1163/156853907782418196>
- Cantlon, J. F., & Brannon, E. M. (2006). Shared system for ordering small and large numbers in monkeys and humans. *Psychological Science*, 17, 401–406. <https://doi.org/10.1111/j.1467-9280.2006.01719.x>
- Cantlon, J. F., Platt, M. L., & Brannon, E. M. (2009). Beyond the number domain. *Trends in Cognitive Sciences*, 13(2), 83–91. <https://doi.org/10.1016/j.tics.2008.11.007>

- d'Ettorre, P., Meunier, P., Simonelli, P., & Call, J. (2021). Quantitative cognition in carpenter ants. *Behavioral Ecology and Sociobiology*, 75(5), Article 86.
<https://doi.org/10.1007/s00265-021-03020-5>
- DeBoer, H., Fitzpatrick, H., Wolff, L. M., Gatesy-Davis, A., & Stevens, J. R. (2024). *Do dogs follow Weber's Law? The role of ratio and difference in quantity preference*. PsyArXiv.
<https://doi.org/10.31234/osf.io/rn8gq>
- Ditz, H. M., & Nieder, A. (2016). Numerosity representations in crows obey the Weber–Fechner law. *Proceedings of the Royal Society B: Biological Sciences*, 283(1827), Article 20160083. <https://doi.org/10.1098/rspb.2016.0083>
- Feigenson, L., Carey, S., & Hauser, M. D. (2002). The representations underlying infants' choice of more: Object files versus analog magnitudes. *Psychological Science*, 13(2), 150–156. <https://doi.org/10.1111/1467-9280.00427>
- Gohel, D., & Skintzos, P. (2024). *flextable: Functions for tabular reporting*. <https://ardata-fr.github.io/flextable-book/>
- Hanus, D., & Call, J. (2007). Discrete quantity judgments in the great apes (*Pan paniscus*, *Pan troglodytes*, *Gorilla gorilla*, *Pongo pygmaeus*): The effect of presenting whole sets versus item-by-item. *Journal of Comparative Psychology*, 121(3), 241–249. <https://doi.org/10.1037/0735-7036.121.3.241>
- Hunt, S., Low, J., & Burns, K. C. (2008). Adaptive numerical competency in a food-hoarding songbird. *Proceedings of the Royal Society of London, Series B*, 275, 2373–2379. <https://doi.org/10.1098/rspb.2008.0702>
- Irie-Sugimoto, N., Kobayashi, T., Sato, T., & Hasegawa, T. (2009). Relative quantity judgment by Asian elephants (*Elephas maximus*). *Animal Cognition*, 12(1), 193–199. <https://doi.org/10.1007/s10071-008-0185-9>
- Kelly, E. M. (2016). Counting on your friends: The role of social environment on quantity discrimination. *Behavioural Processes*, 128, 9–16. <https://doi.org/10.1016/j.beproc.2016.03.019>
- Larmarange, J. (2024). *labelled: Manipulating labelled data*. <https://larmarange.github.io/labelled/>
- Lin, F.-C., Whiting, M. J., Hsieh, M.-Y., Shaner, P.-J. L., & Lin, S.-M. (2021). Superior continuous quantity discrimination in a freshwater turtle. *Frontiers in Zoology*, 18(1), Article 49. <https://doi.org/10.1186/s12983-021-00431-y>
- Lucon-Xiccato, T., Gatto, E., & Bisazza, A. (2018). Quantity discrimination by treefrogs. *Animal Behaviour*, 139, 61–69. <https://doi.org/10.1016/j.anbehav.2018.03.005>
- Lüdecke, D., Ben-Shachar, M. S., Patil, I., Waggoner, P., & Makowski, D. (2021). performance: An R package for assessment, comparison and testing of statistical models. *Journal of Open Source Software*, 6(60), Article 3139. <https://doi.org/10.21105/joss.03139>

- Makowski, D., Ben-Shachar, M. S., & Lüdtke, D. (2019). bayestestR: Describing effects and their uncertainty, existence and significance within the Bayesian framework. *Journal of Open Source Software*, 4(40), Article 1541. <https://doi.org/10.21105/joss.01541>
- May, K. A., & Laflamme, D. P. (2019). Nutrition and the aging brain of dogs and cats. *Journal of the American Veterinary Medical Association*, 255(11), 1245–1254. <https://doi.org/10.2460/javma.255.11.1245>
- Meck, W. D., & Church, R. M. (1983). A mode control model of counting and timing processes. *Journal of Experimental Psychology: Animal Behavior Processes*, 9(3), 320–334. <https://doi.org/10.1037/0097-7403.9.3.320>
- Mendelson, T. C., Fitzpatrick, C. L., Hauber, M. E., Pence, C. H., Rodríguez, R. L., Safran, R. J., Stern, C. A., & Stevens, J. R. (2016). Cognitive phenotypes and the evolution of animal decisions. *Trends in Ecology & Evolution*, 31(11), 850–859. <https://doi.org/10.1016/j.tree.2016.08.008>
- Miletto Petrazzini, M. E., & Wynne, C. D. L. (2016). What counts for dogs (*Canis lupus familiaris*) in a quantity discrimination task? *Behavioural Processes*, 122, 90–97. <https://doi.org/10.1016/j.beproc.2015.11.013>
- Morey, R. D., & Rouder, J. N. (2024). *BayesFactor: Computation of Bayes factors for common designs*. <https://richarddmorey.github.io/BayesFactor/>
- Müller, K. (2020). *here: A simpler way to find your files*. <https://here.r-lib.org/>
- Nieder, A. (2020). The adaptive value of numerical competence. *Trends in Ecology & Evolution*, 35(7), 605–617. <https://doi.org/10.1016/j.tree.2020.02.009>
- Nieder, A., Freedman, D. J., & Miller, E. K. (2002). Representation of the quantity of visual items in the primate prefrontal cortex. *Science*, 297(5587), 1708–1711. <https://doi.org/10.1126/science.1072493>
- Nippak, P. M. D., Mendelson, J., Muggenburg, B., & Milgram, N. W. (2007). Enhanced spatial ability in aged dogs following dietary and behavioural enrichment. *Neurobiology of Learning and Memory*, 87(4), 610–623. <https://doi.org/10.1016/j.nlm.2007.01.001>
- Odic, D., & Starr, A. (2018). An introduction to the approximate number system. *Child Development Perspectives*, 12(4), 223–229. <https://doi.org/10.1111/cdep.12288>
- Pedersen, T. L. (2024). *patchwork: The composer of plots*. <https://patchwork.data-imaginist.com>
- Potrich, D., Sovrano, V. A., Stancher, G., & Vallortigara, G. (2015). Quantity discrimination by zebrafish (*Danio rerio*). *Journal of Comparative Psychology*, 129(4), 388–393. <https://doi.org/10.1037/com0000012>
- R Core Team. (2024). *R: A language and environment for statistical computing*. R Foundation for Statistical Computing. <https://www.R-project.org/>
- Rivas-Blanco, D., Pohl, I.-M., Dale, R., Heberlein, M. T. E., & Range, F. (2020). Wolves and dogs may rely on non-numerical cues in quantity discrimination tasks when given the choice. *Frontiers in Psychology*, 11, Article 573317. <https://doi.org/10.3389/fpsyg.2020.573317>

- Rohatgi, A. (2024). *WebPlotDigitizer*. <https://automeris.io/>
- Schneider, W. J. (2024). *apaquarto*. <https://wjschne.github.io/apaquarto>
- Slowikowski, K. (2024). *ggrepel: Automatically position non-overlapping text labels with “ggplot2”*. <https://ggrepel.slowkow.com/>
- Stevens, J. R. (2025a). *cocoon: Format and print statistical output*. <https://github.com/JeffreyRStevens/cocoon>
- Stevens, J. R. (2025b). *detritus: Collection of miscellaneous tools*. <https://github.com/JeffreyRStevens/detritus>
- Stevens, J. R., Mathias, M., Herridge, M., Hughes-Duvall, K., Wolff, L. M., & Yohe, M. (2022). Do owners know how impulsive their dogs are? *Animal Behavior and Cognition*, 9(3), 261–286. <https://doi.org/10.26451/abc.09.03.02.2022>
- Tomonaga, M. (2008). Relative numerosity discrimination by chimpanzees (*Pan troglodytes*): Evidence for approximate numerical representations. *Animal Cognition*, 11(1), 43–57. <https://doi.org/10.1007/s10071-007-0089-0>
- Tornick, J. K., Callahan, E. S., & Gibson, B. M. (2015). An investigation of quantity discrimination in Clark’s nutcrackers (*Nucifraga columbiana*). *Journal of Comparative Psychology*, 129(1), 17–25. <https://doi.org/10.1037/a0037863>
- Wagenmakers, E.-J. (2007). A practical solution to the pervasive problems of *p* values. *Psychonomic Bulletin & Review*, 14(5), 779–804. <https://doi.org/10.3758/BF03194105>
- Wagenmakers, E.-J., Love, J., Marsman, M., Jamil, T., Ly, A., Verhagen, J., Selker, R., Gronau, Q. F., Dropmann, D., Boutin, B., Meerhoff, F., Knight, P., Raj, A., Kesteren, E.-J. van, Doorn, J. van, Šmíra, M., Epskamp, S., Etz, A., Matzke, D., ... Morey, R. D. (2018). Bayesian inference for psychology. Part II: Example applications with JASP. *Psychonomic Bulletin & Review*, 25(1), 58–76. <https://doi.org/10.3758/s13423-017-1323-7>
- Ward, C., & Smuts, B. B. (2007). Quantity-based judgments in the domestic dog (*Canis lupus familiaris*). *Animal Cognition*, 10(1), 71–80. <https://doi.org/10.1007/s10071-006-0042-7>
- Wickham, H., Averick, M., Bryan, J., Chang, W., McGowan, L. D., François, R., Grolemund, G., Hayes, A., Henry, L., Hester, J., Kuhn, M., Pedersen, T. L., Miller, E., Bache, S. M., Müller, K., Ooms, J., Robinson, D., Seidel, D. P., Spinu, V., ... Yutani, H. (2019). Welcome to the tidyverse. *Journal of Open Source Software*, 4(43), Article 1686. <https://doi.org/10.21105/joss.01686>
- Wickham, H., Pedersen, T. L., & Seidel, D. (2023). *scales: Scale functions for visualization*. <https://scales.r-lib.org>
- Wolff, L. M., Carey, K., & Stevens, J. R. (2024). Friends aren’t food: Pinyon jays (*Gymnorhinus cyanocephalus*) show context-dependent quantity preference. *Animal Behavior and Cognition*, 11(2), 112–135. <https://doi.org/10.26451/abc.11.02.01.2024>
- Xu, F., & Spelke, E. S. (2000). Large number discrimination in 6-month-old infants. *Cognition*, 74, B1–B11. [https://doi.org/10.1016/s0010-0277\(99\)00066-9](https://doi.org/10.1016/s0010-0277(99)00066-9)

Received: October 2, 2024

